An architectural rendering of a modern villa named 'Villa Bliss'. The scene is viewed from a low angle across a swimming pool. In the background, a two-story building with large glass windows and a balcony is visible. The interior of the villa is furnished with contemporary decor, including a dining table with chairs and a lounge area. A central logo, consisting of a circular wreath of blue leaves, is superimposed over the image. The text 'MAIROS CRI' is written across the logo. The overall atmosphere is bright and luxurious.

MAIROS CRI

VILLA BLISS

Prestige Tenerife Property for Sale

WHAT WE DO

Mairoscri Developments specialise in niche luxury real estate development projects in the Canary Islands providing investors with off-market, high yield return on investments whilst delighting our clients with luxurious living, iconic designs, and high quality materials.

With a commitment to delivering extraordinary residences, we curate the epitome of luxury living experiences in the enchanting island of Tenerife.

You're a step closer to owning your dream island home.

Our expert team of architects, designers, and real estate professionals craft prestigious properties that embody sophistication, innovation, and comfort.

Whether seeking a lavish villa overlooking the azure ocean or a contemporary penthouse in the vibrant cityscape, Mairoscri Developments ensure an exceptional journey towards acquiring your dream home in this idyllic paradise.



VILLA BLISS ocean views

Discover luxury living at its finest in this extraordinary property in Costa Adeje, Tenerife.

Experience the pinnacle of luxury living in this extraordinary property.

With a spacious open terrace, BBQ zone, firepit, and a garden offering clear ocean views, it's a paradise for relaxation and entertainment. Three parking spaces, including a garage, ensure convenience. The 4 bedrooms and 4 bathrooms provide ample space for family and guests, while a private gym, a cinema and a games room.

The pièce de résistance is the private heated pool, inviting you to indulge in pure bliss.

This is an unrivaled opportunity to own an exquisite home that surpasses all expectations.

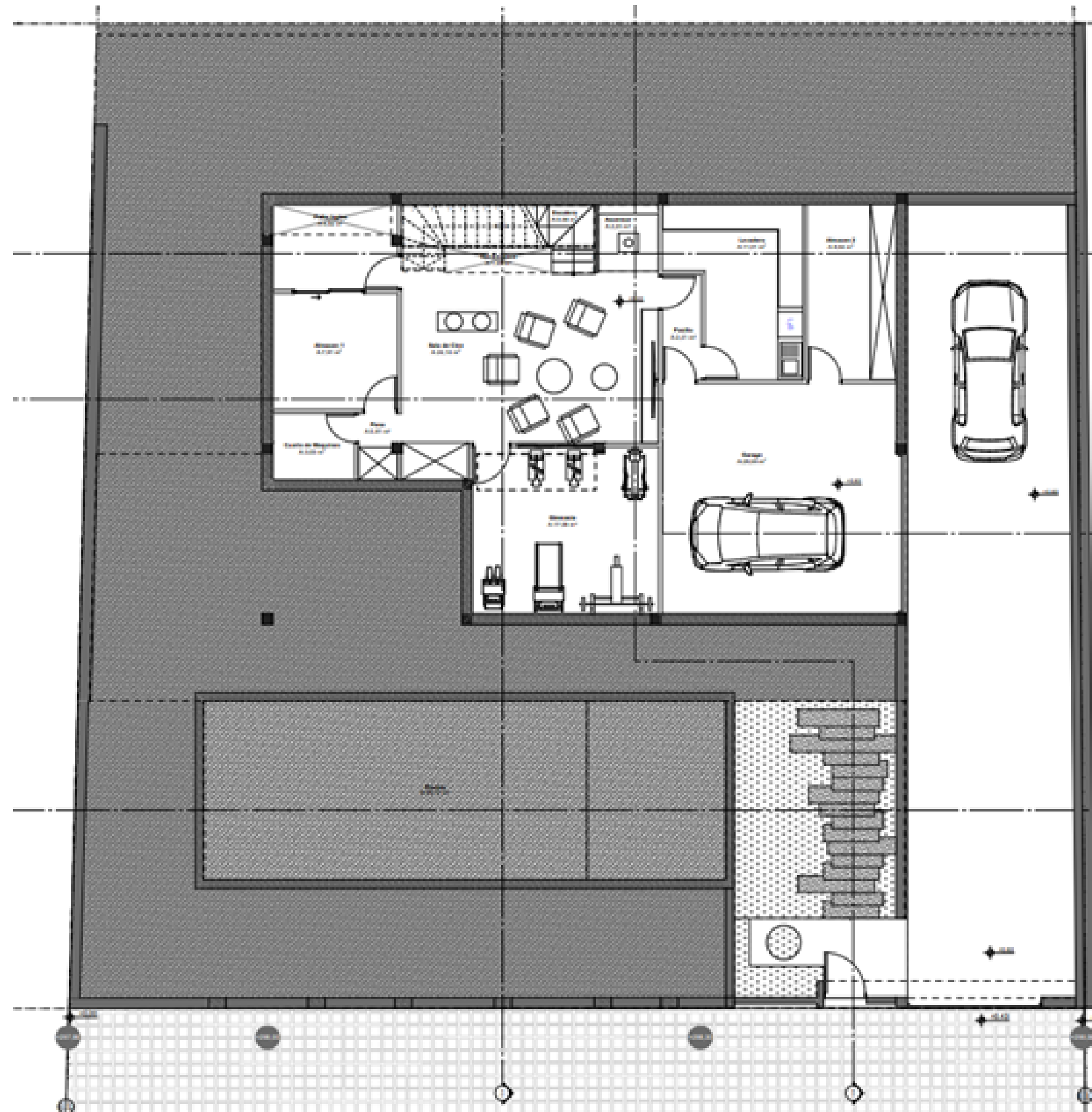
VIRTUAL TOUR





LOWER GROUND LEVEL

Entertainment & Leisure



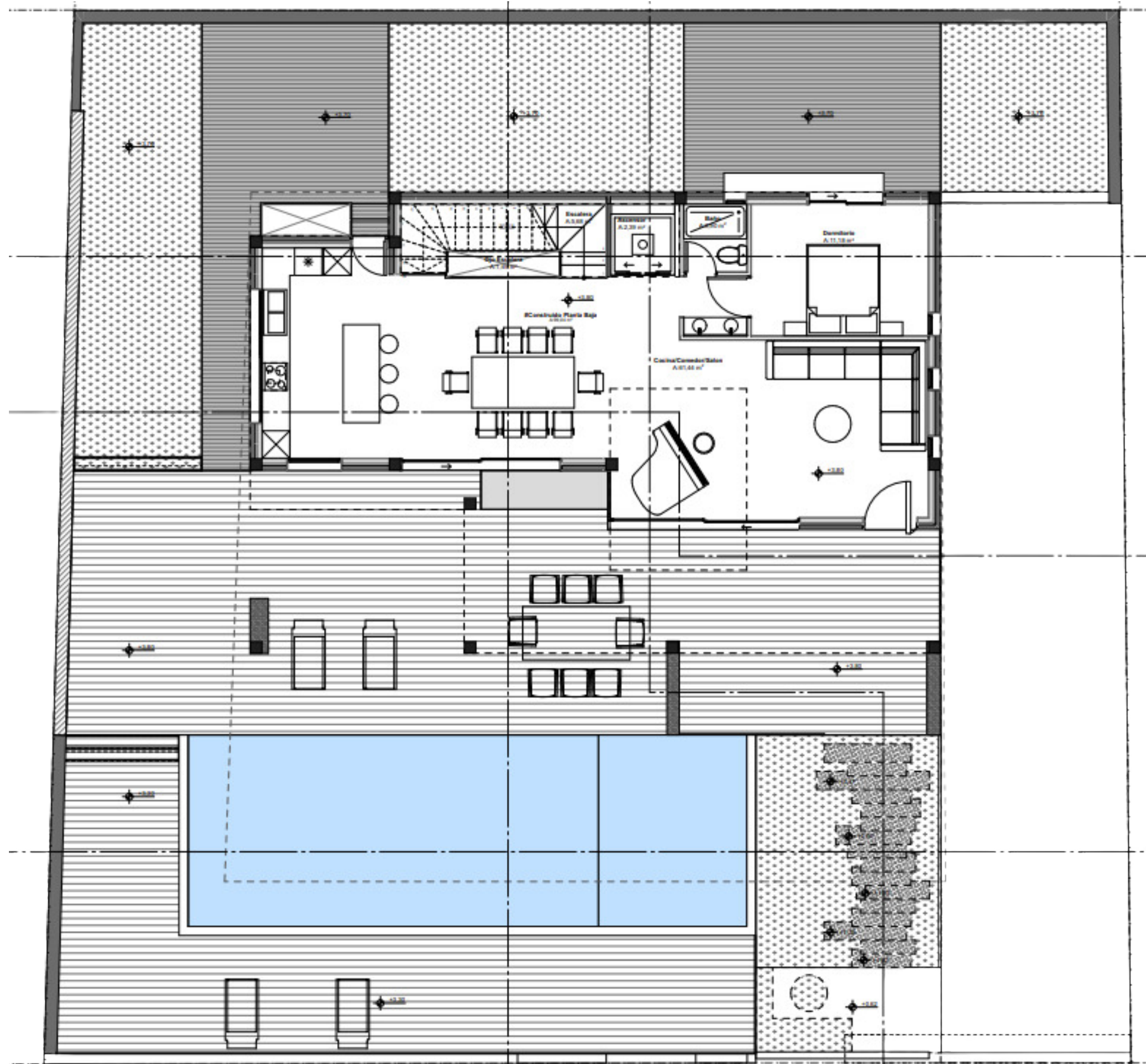
LOWER GROUND LEVEL	SUR. UTIL M2	BUILT AREA M2
Warehouse 1	7,91	
Elevator	2,23	
Parking space	2,73	
Passage	0,81	
Warehouse 2	8,54	
Stairs	5,56	
Garage	29,59	
Gym	17,08	
Laundry	11,01	
Eye Stairs	1,49	
Corridor	2,21	
English Courtyard	5,82	
Cinema	24,14	
TOT. LOWER GROUND L.	119,12	135,74





GROUND FLOOR

Open-space kitchen & lounge



GROUND FLOOR	SUR. UTIL M2	BUILT AREA M2
Kitchen/Dining Room/Living Room	61,44	
Elevator	2,39	
Bathroom	3,90	
Bedroom	11,18	
Stairs	5,68	
TOT. GROUND FLOOR	84,59	99,04



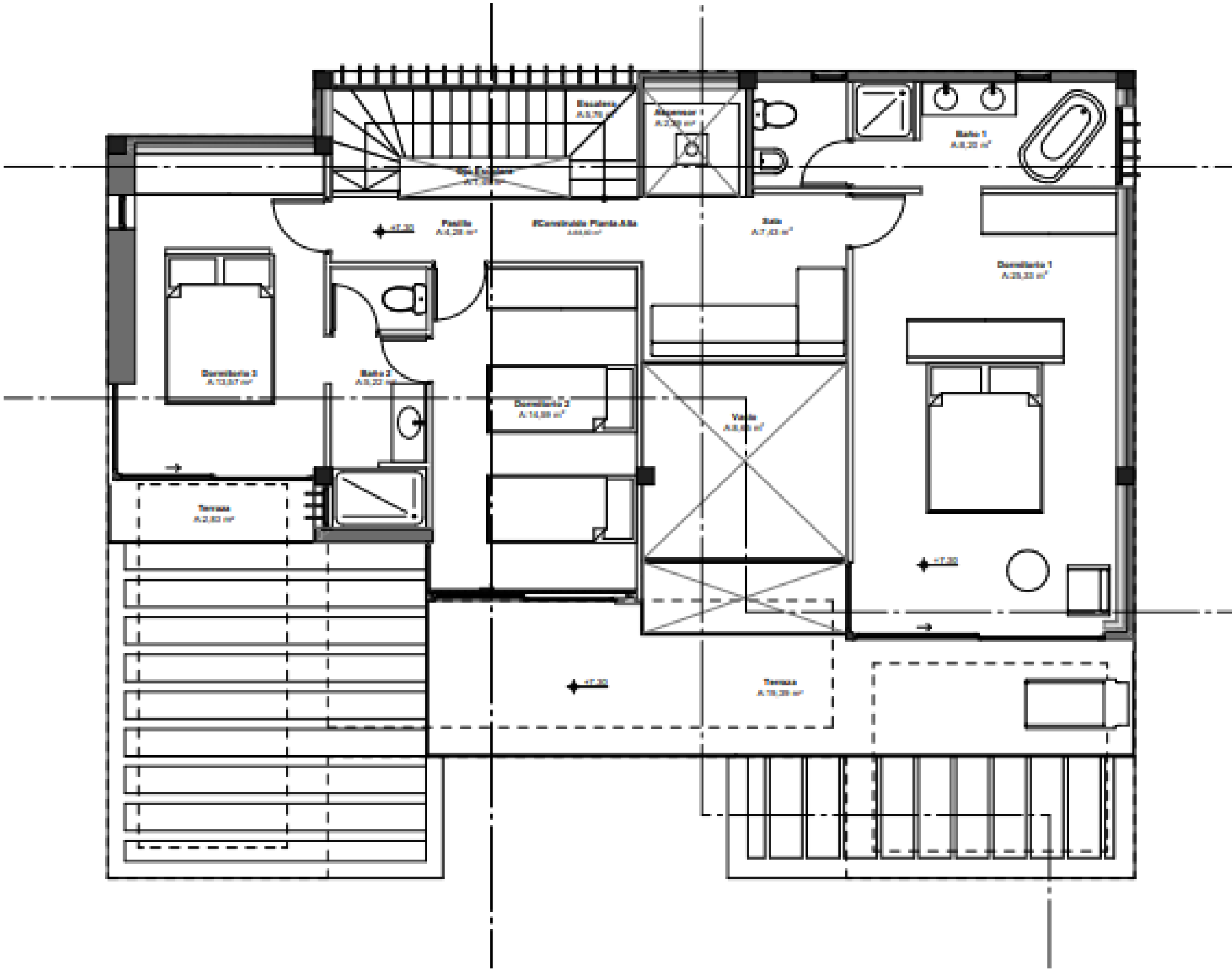






FIRST FLOOR

bedrooms & ensuite



FIRST FLOOR	SUR. UTIL M2	BUILT AREA M2
Bathroom 1	8,20	
Bathroom 2	5,22	
Bedroom 1	25,33	
Bedroom 2	14,59	
Bedroom 3	13,57	
Corridor	4,28	
Living room	7,43	
TOT. FIRST FLOOR	78,62	88,80



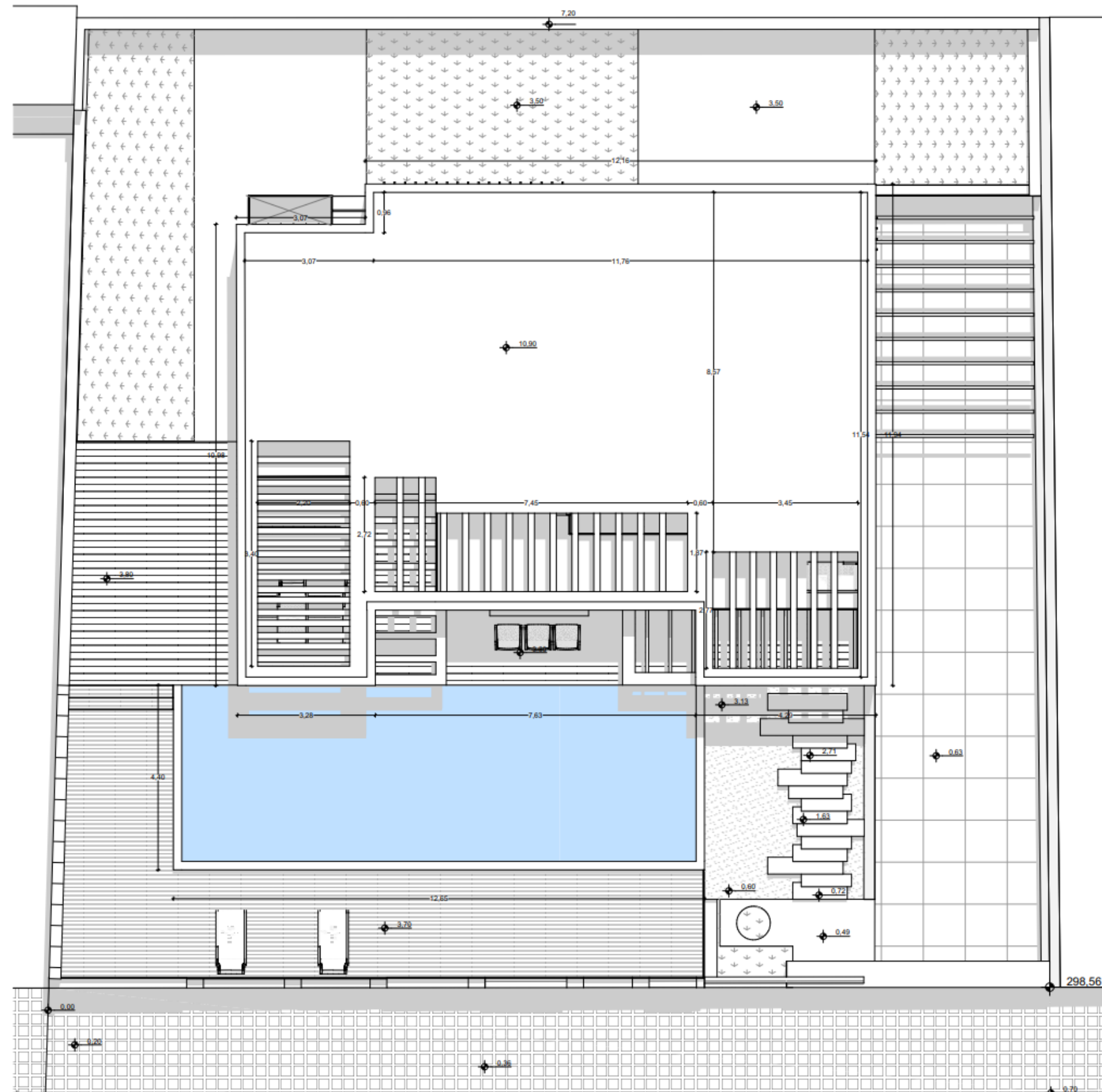






ROOF TERRACE

Solarium with ocean view





LOCATION

Calle Navarra, 19
Urb. Roque del Conde
38660, Adeje
Tenerife, Spain

Cadastral Reference:
2286010CS3028N0001HW

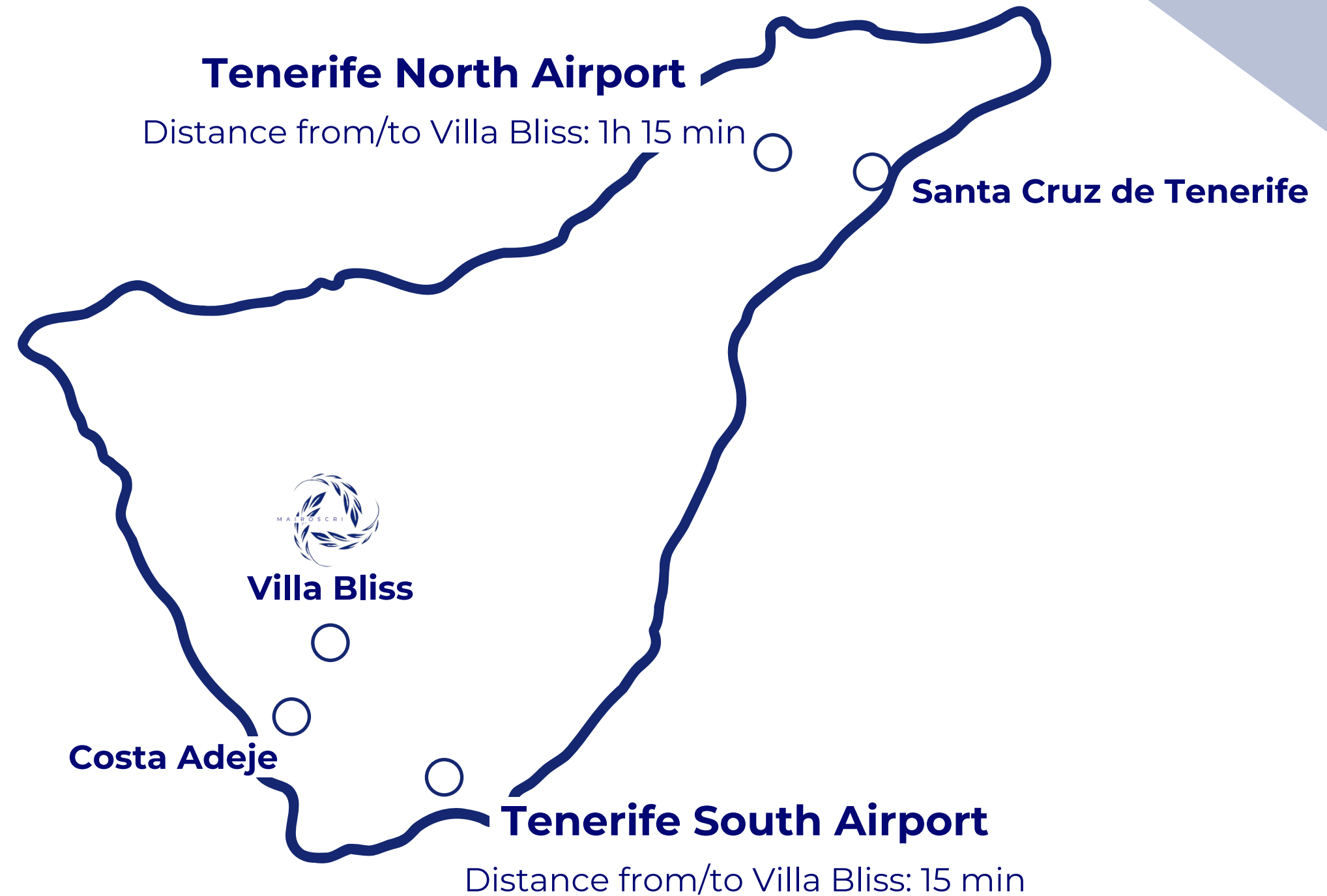
Architect:
Sebastian Estrella

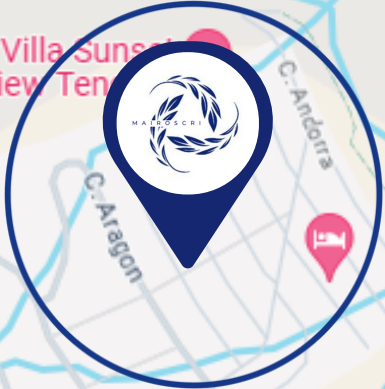
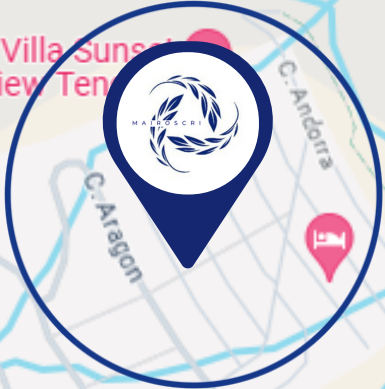
Construction:
Mairoscri Construction

Plot: **543 m²**

Built: **325m²**

Living: **282 m²**







GOBIERNO DE ESPAÑA

MINISTERIO DE HACIENDA Y FUNCIÓN PÚBLICA

SECRETARÍA DE ESTADO DE HACIENDA

DIRECCIÓN GENERAL DEL CATASTRO

CONSULTA DESCRIPTIVA Y GRÁFICA DE DATOS CATASTRALES DE BIEN INMUEBLE

Referencia catastral: 2286010CS3028N0001HW

DATOS DESCRIPTIVOS DEL INMUEBLE

Localización:

CL NAVARRA 25 Suelo UD 13-24
38660 ADEJE [COSTA ADEJE] [S.C. TENERIFE]

Clase: URBANO

Uso principal: Suelo sin edif.

Superficie construida:

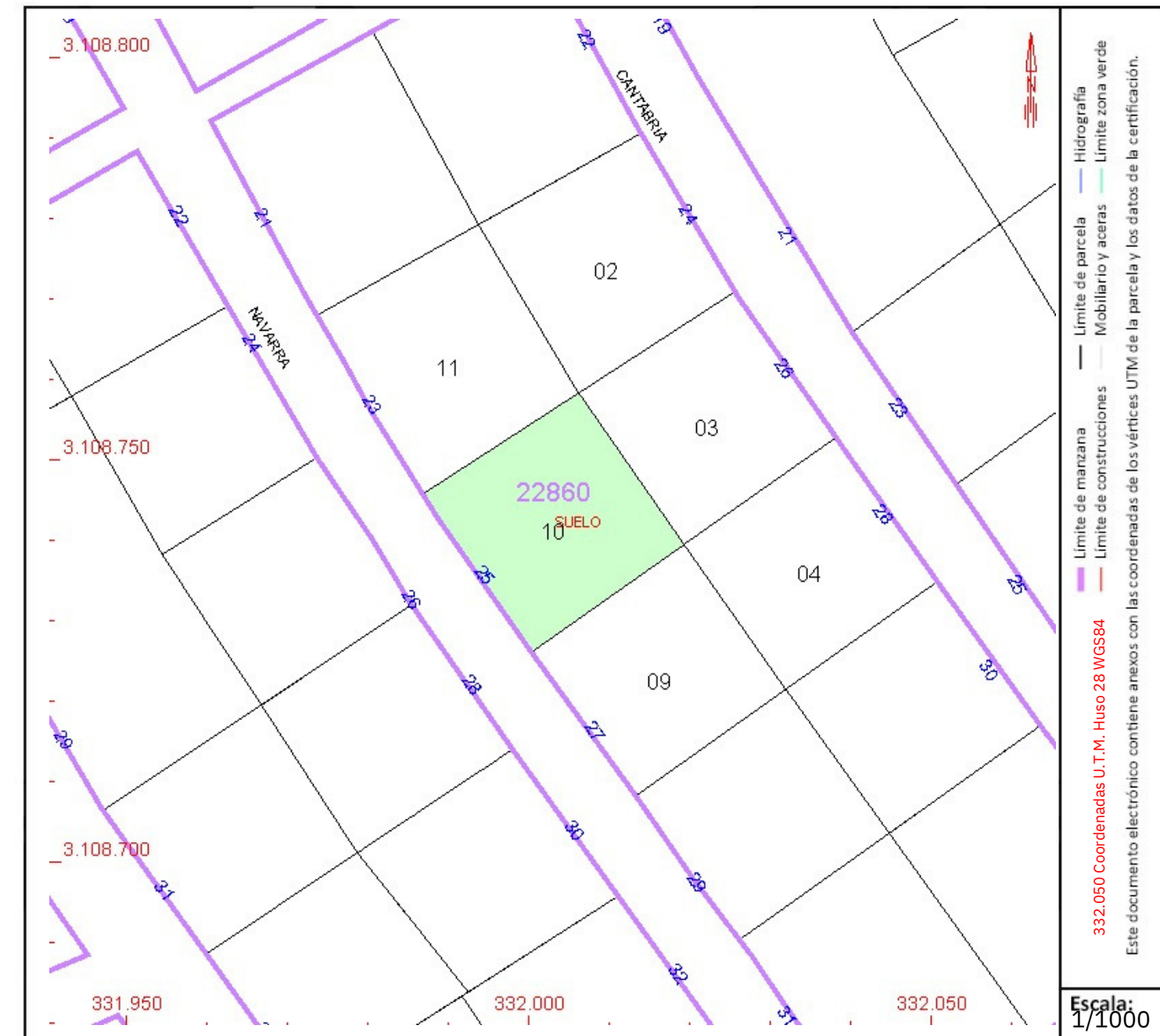
Año construcción:

PARCELA

Superficie gráfica: 543 m²

Participación del inmueble: 100,00 %

Tipo:



Este documento no es una certificación catastral, pero sus datos pueden ser verificados a través del "Acceso a datos catastrales no protegidos de la SEC"



BUILD CHARACTERISTIC

- Plot size: 543m²
- Living Plot: 325m² (including 136m² basement floor)
- Open space Terrace + BBQ Zone + Firepit
- Garden
- Clear ocean view
- Garage
- 4 Bedrooms
- 4 Bathrooms
- Gym
- Cinema + a Games Room & Bar
- Private heated pool
- NIGHT Light Scenarios
- High-quality large format tiles (Lamborghini Quality Tiles)





PLACES OF INTEREST

Cities and Historic Villages

- Santa Cruz de Tenerife
- La Laguna
- La Orotava
- Masca
- Candelaria
- Adeje
- Ecod de los Vinos



Beaches

- Puerto de La Cruz
- El Medano
- Playa Abama
- Las Americas
- Los Gigantes
- Los Cristianos
- La Caleta



Attractions

- Loro Parque
- Siam Park
- Whales and Dolphins Boat Excursions
- Quads Excursions
- Karts Racing
- Jet Skis
- Submarine Drive



Natural Parks

- La Esperanza
- Anaga
- Teno
- Las Mercedes



GOLF COURSES

- Real Club de Golf de Tenerife
- Abama Golf
- Amarilla Golf
- Golf Costa Adeje
- Golf del Sur
- Golf Las Américas
- Centro de Golf Los Palos





GASTRONOMIC EXPERIENCES

- Kensei
- Char
- Bloom
- Donaire
- La Vieja
- Meson Los Gemelos
- Taberna Vasca Txupinazo





Mairoscri Developments
Calle Montaña Clara, 5
38679 Fañabe, Adeje
Tenerife, Spain
e-Mail: info@mairoscri.com
Tel: +34 689 659 048



www.mairoscridevelopments.com